

10ziG®

10ziG Manager Backups

Document and Version Control

Version	Created by	Date	Authorized & Checked
2.0	Casey Vogt	09/17/19	
2.1	Alex Hyatt	05/11/21	

10ZiG Manager Backups

Introduction

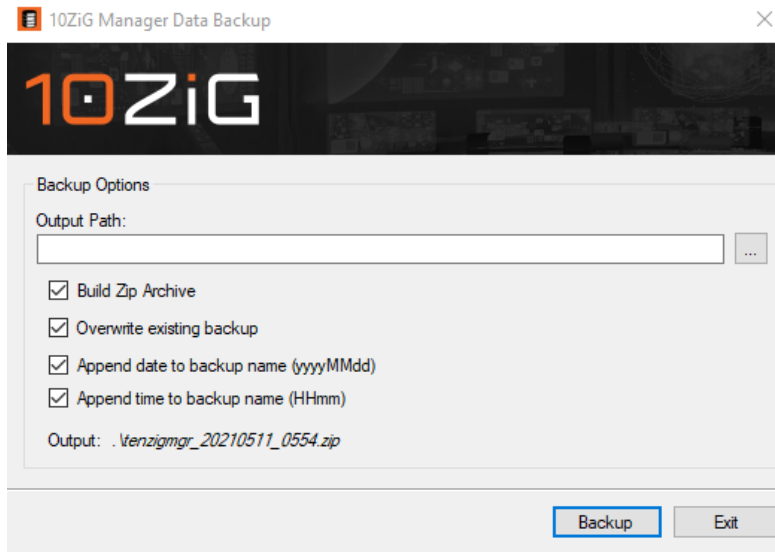
10ZiG Manager ships with an internal tool that allows backing up the manager database, template files and registry settings. Along with the use of the Windows Task Scheduler, Manager backups can be automated to be performed at desired intervals providing a means of disaster recovery or server migration.

Contents

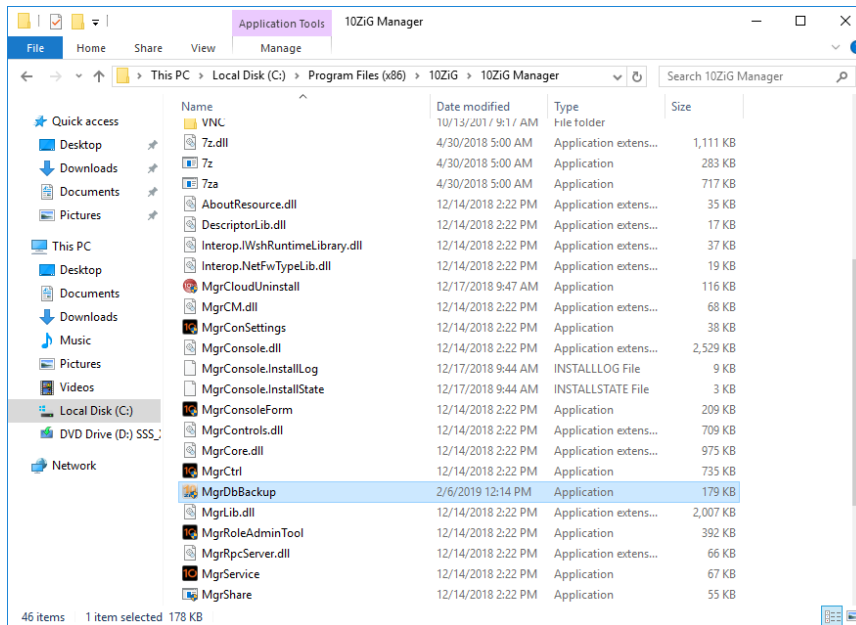
10ZiG Manager Backups	2
Introduction.....	2
The MgrDbBackup.exe utility	3
Automate Backup with Task Scheduler	5
Backing Up ImageStore Folder	13
Recovery after Disaster.....	13
Installing a New Instance	13
Restore from Backup Archive	16

The MgrDbBackup.exe utility

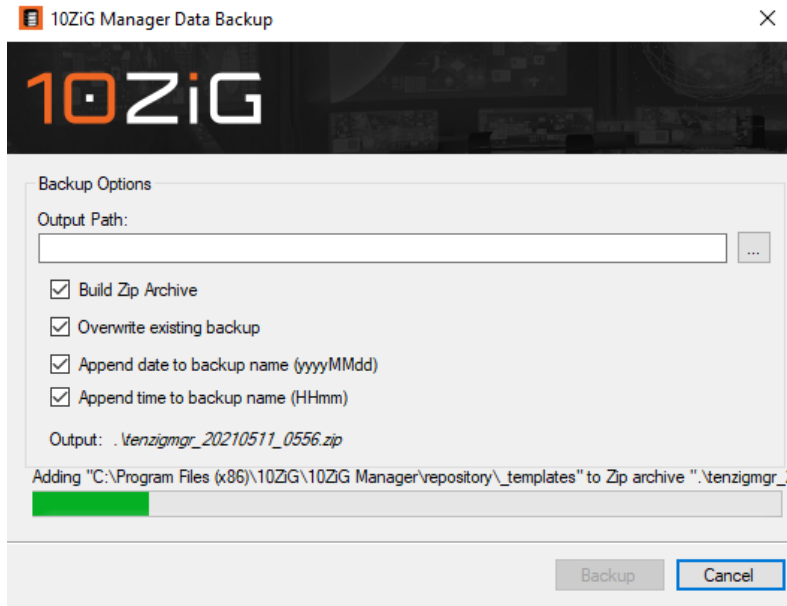
1. The 10ZiG Manager installation includes a backup utility named “MgrDbBackup.exe”. It can be used to back up all necessary data allowing restoration of functionality. This data includes the MySQL database structure, configured settings stored within the Windows registry and template configuration files.



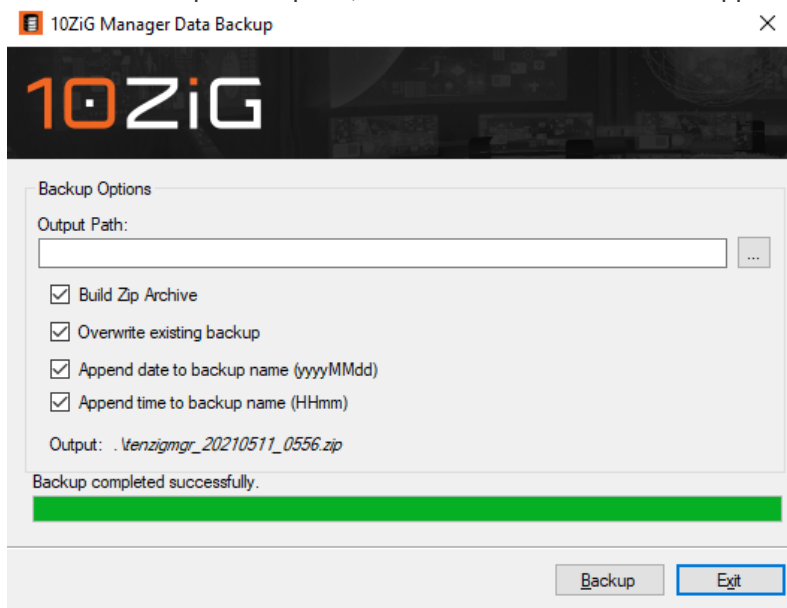
2. The backup utility can be launched interactively or can be provided with command line parameters for automated execution. Navigate to the Manager installation path, typically “C:\Program Files (x86)\10ZiG\10ZiG Manager” on 64-bit Windows and “C:\Program Files\10ZiG\10ZiG Manager” for 32-bit.



3. Launch the “MgrDbBackup.exe” and specify an output directory and desired options to control how the backup runs.
 - a. **Output Path** - Browse to and select a directory to place the backup files or archive. You can also type in the path of choice. If no path is specified, the backup files are created in the current directory of the executable.
 - b. **Build Zip Archive** - This option specifies whether to simply copy the files to the output path or pack them into a Zip archive.
 - c. **Append date to backup name** - Adds the current date to the backup archive filename.
 - d. **Append time to backup name** - Adds the current time to the backup archive filename.
 - e. **Output** - Displays the path and filename to be used.
4. Click the **Backup** button to start the process.

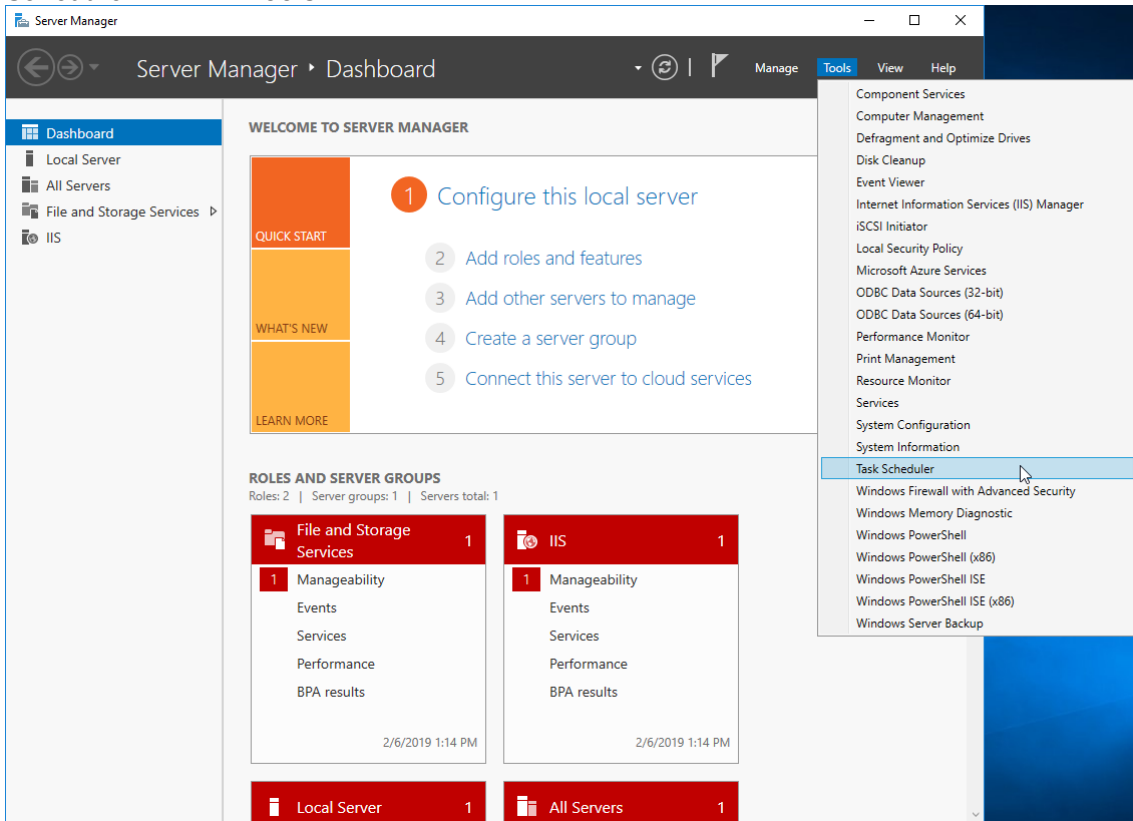


5. Once the backup is complete, click **Exit** button to close the application.

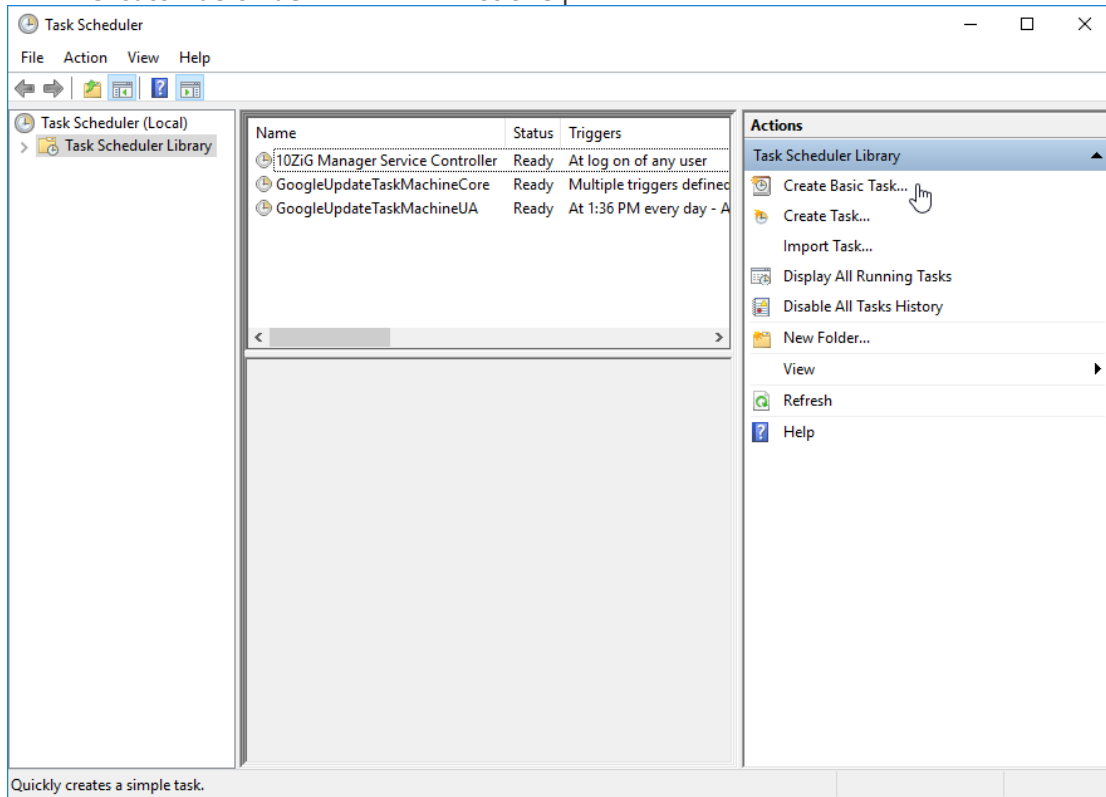


Automate Backup with Task Scheduler

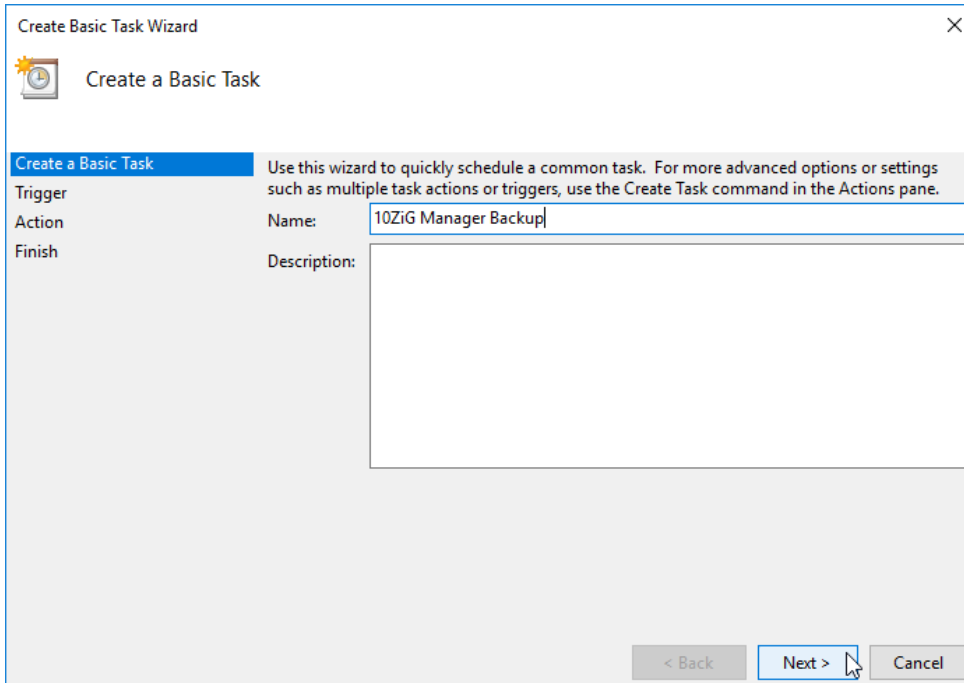
1. The Manager backup can be scheduled to execute at a given time and at regular intervals using the Windows Task Scheduler. On Windows Server, launch **Server Manager** and select **Task Scheduler** from the **Tools** menu.



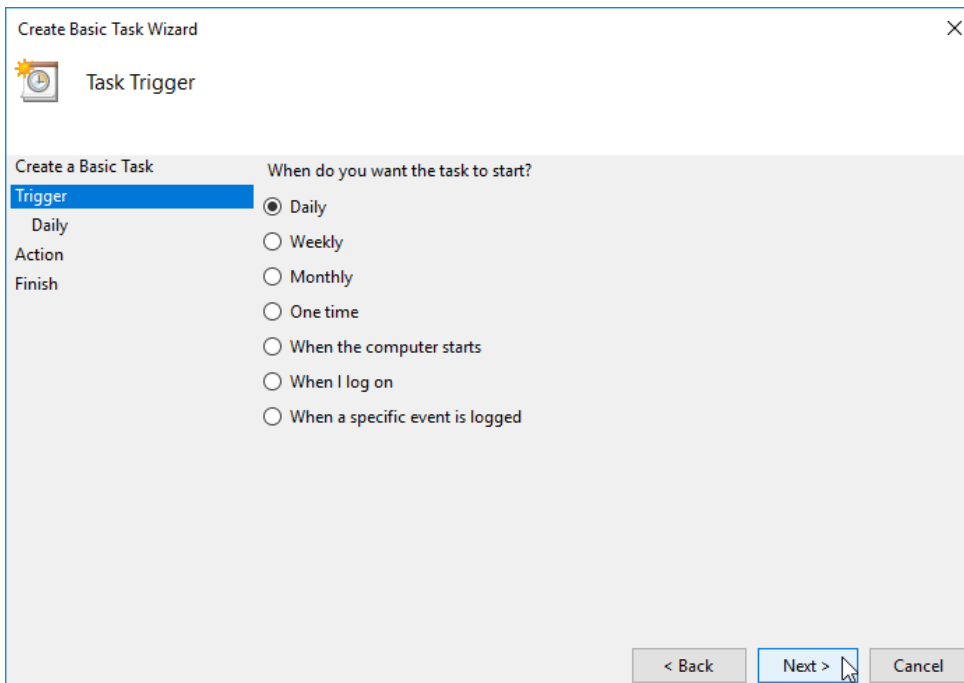
2. Select **Create Basic Task...** from the **Actions** panel to create a new task.



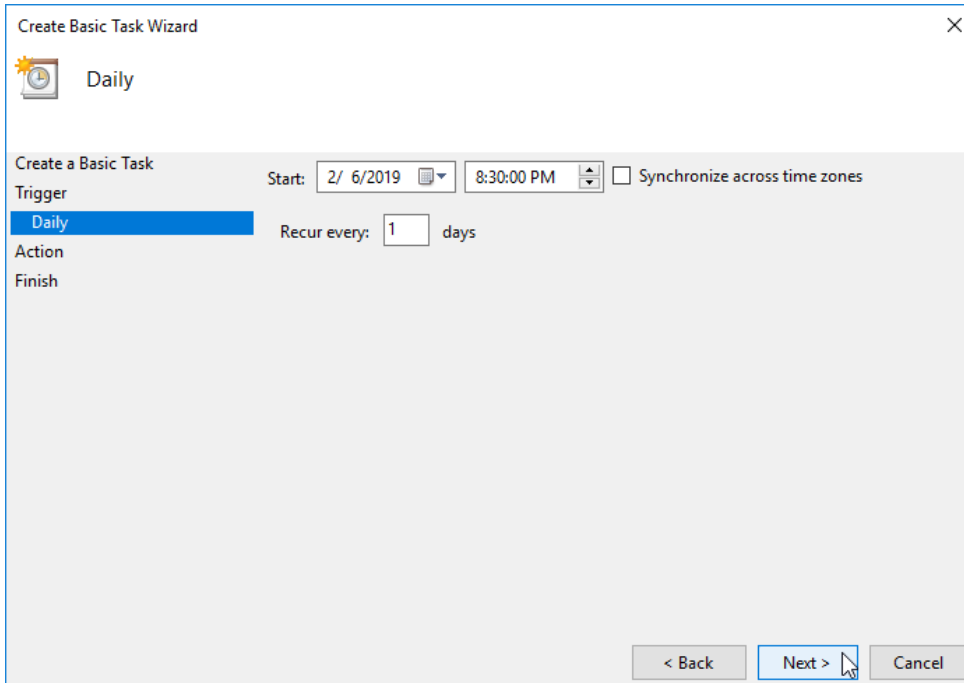
- Specify a name and optionally a description for the task and click the **Next** button.



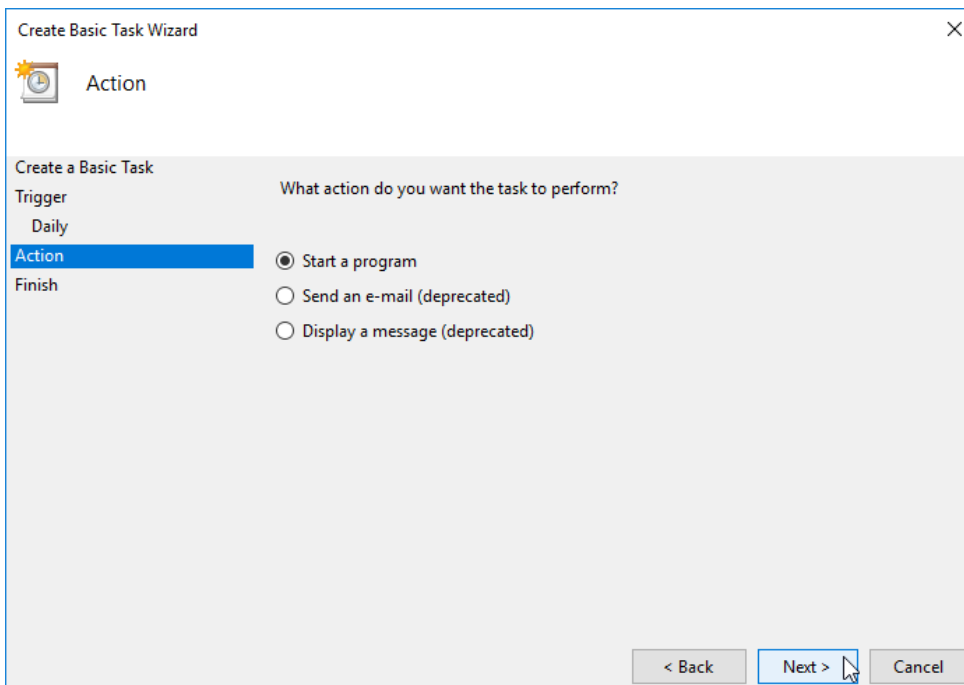
- Choose the frequency, in this example daily execution is selected. Click the **Next** button to proceed.



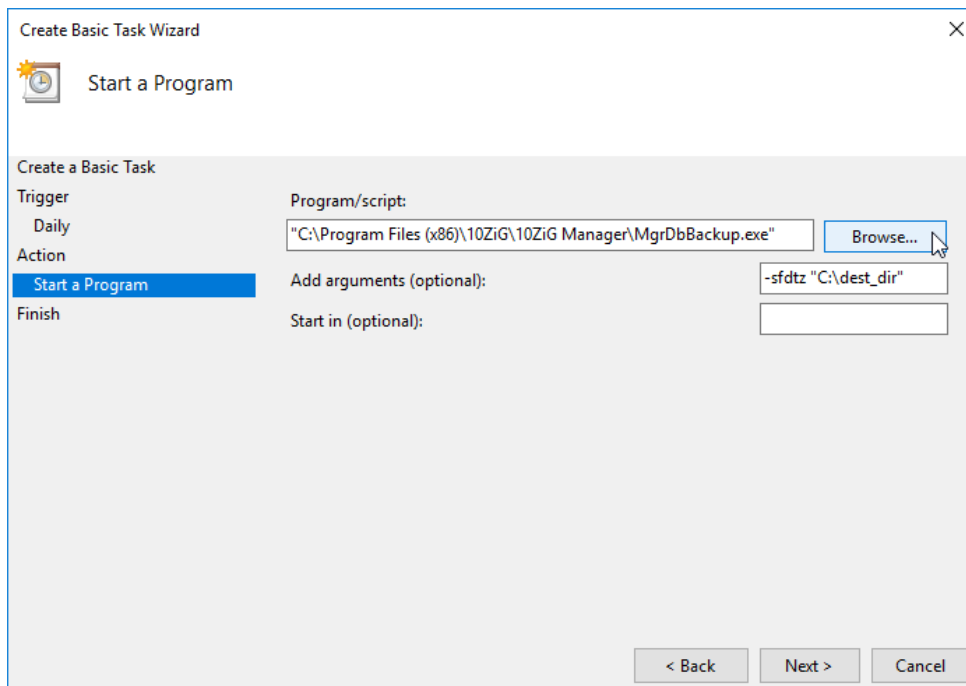
- Specify the start time and click the **Next** button.



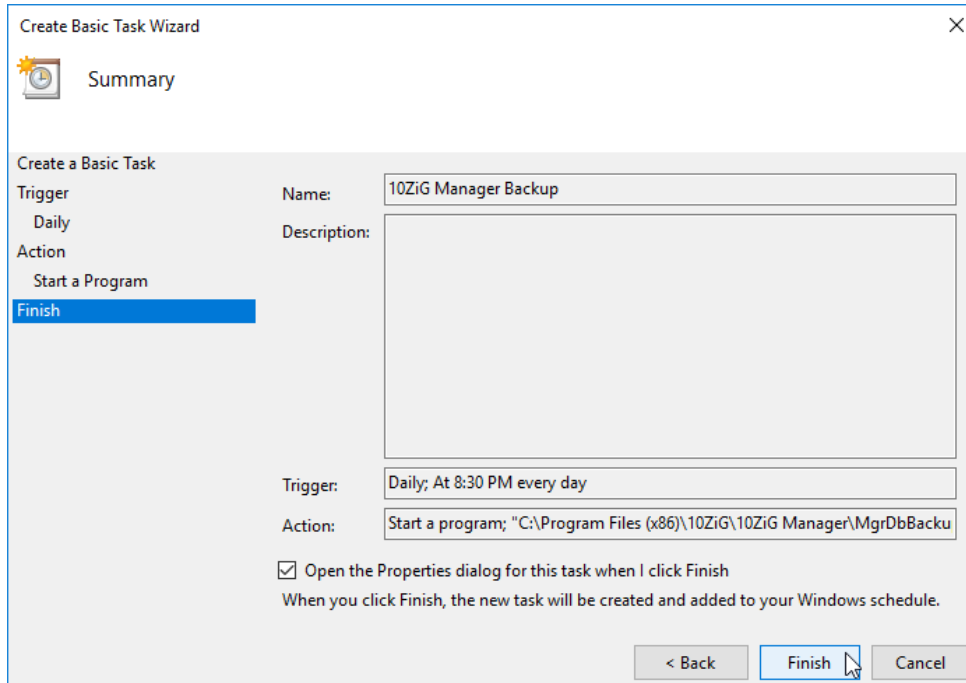
- Choose **Start a program** and click the **Next** button.



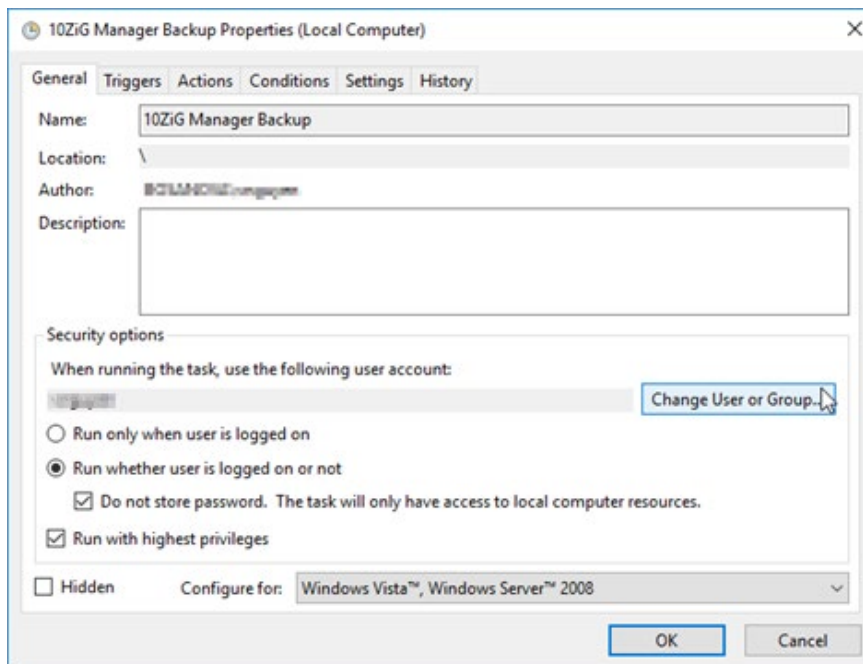
- Click the **Browse** button, navigate to the Manager installation path, and select the “MgrDbBackup.exe” file to execute. Add the arguments “-sfdtz” and a destination path in quotes to specify where to back up the files. Click the **Next** button to proceed.



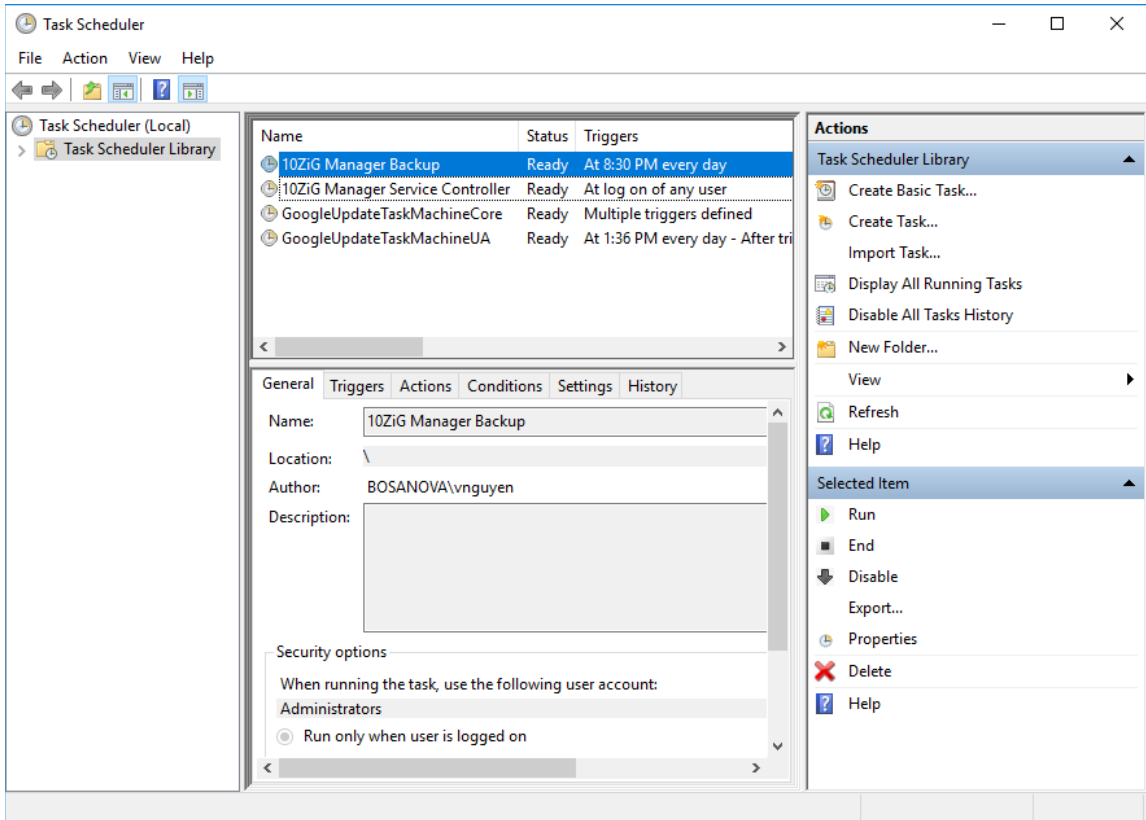
- On the summary page, check the **Open the Properties dialog...** option to bring up the task properties after creating the task. Click the **Finish** button to proceed.



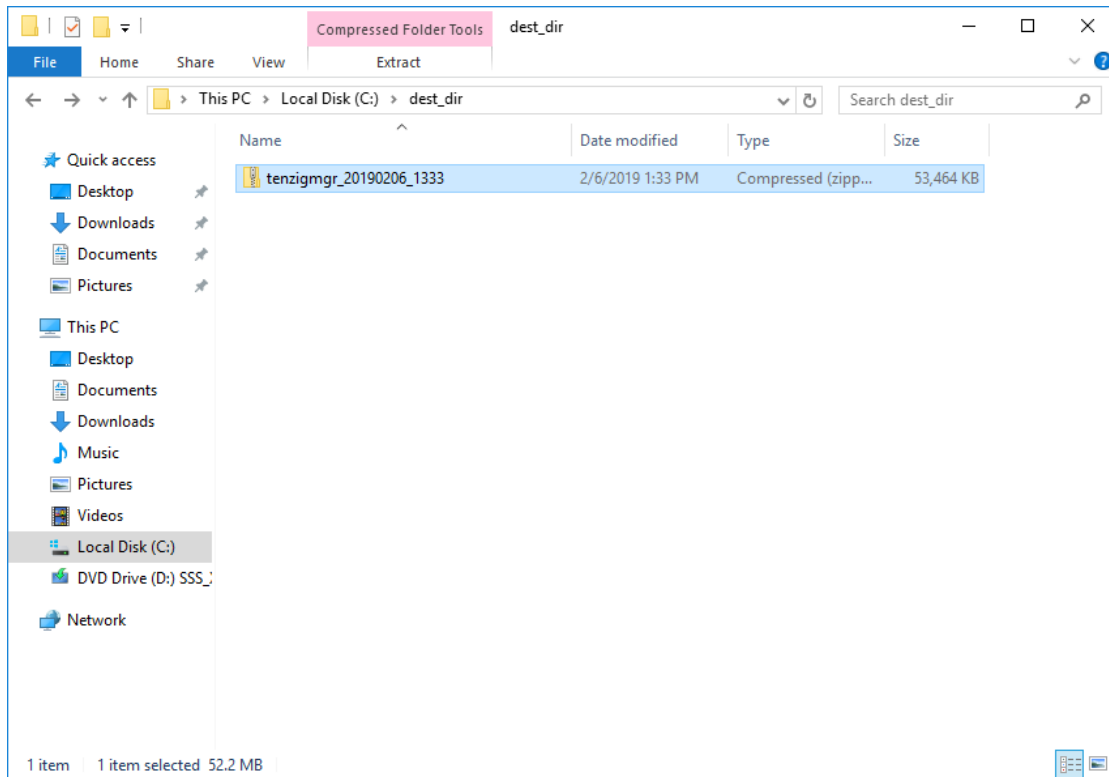
- Make sure to select the **Run whether user is logged on or not** option and check the **Run with highest privileges** option. Click **OK** button to complete the task creation.



10. The newly created task should now be listed in the Task Scheduler.



11. After an instance of task has completed, the backup destination directory should contain a Zip archive named for the date and time of the backup.



Backing Up ImageStore Folder

The ImageStore is the network shared folder where the 10ZiG Manager stores and publishes device OS images. The MgrDbBackup utility does not have provisions for backing up these image files so it is recommended that this folder be backed up using a file system backup tool or manually copying the desired images to another location for safekeeping.

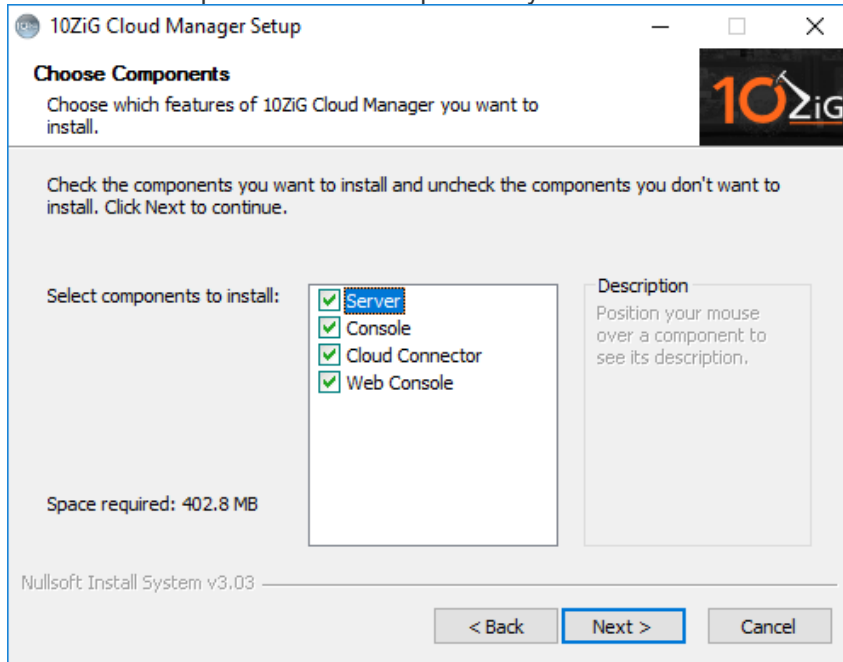
Recovery after Disaster

In the event of data loss or corruption, the 10ZiG Manager functionality can be recovered by installing a new instance, restoring previously backed-up data and adjusting a few settings.

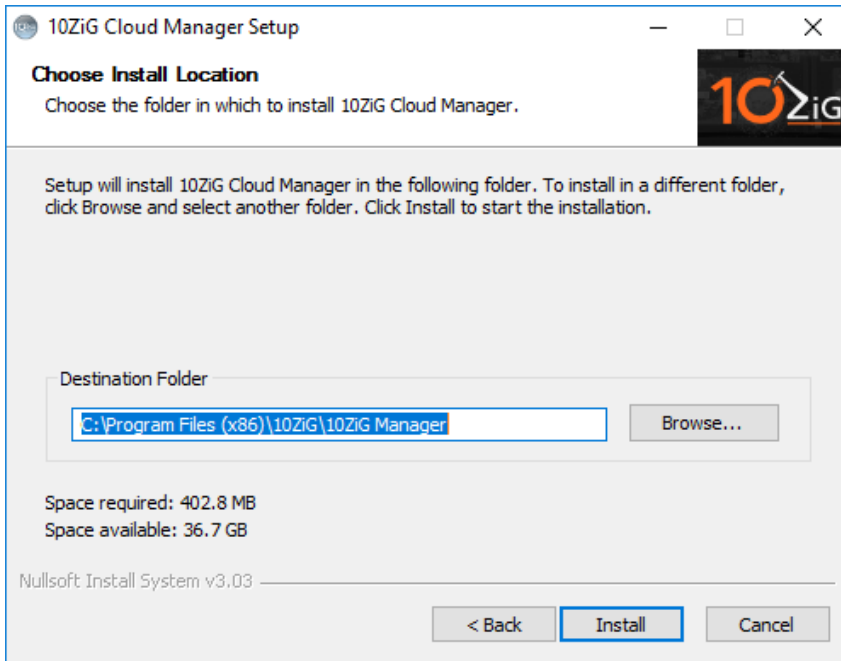
Installing a New Instance

The first step in recovering the 10ZiG Manager is to install a new instance on the rebuilt server or on a different computer.

1. Launch the 10ZiG Cloud Manager installer.
2. Choose the components that were previously installed.



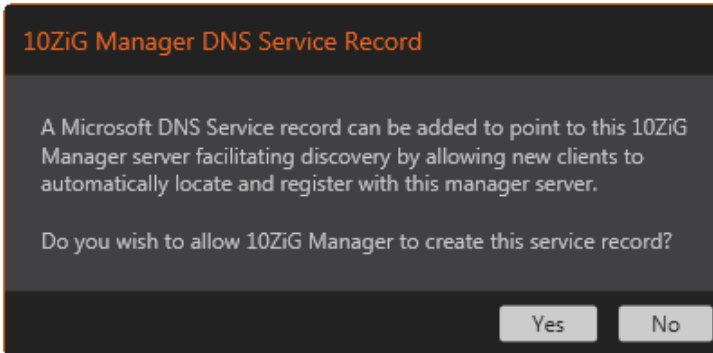
- Specify the installation path, preferably the same path as the previous instance.



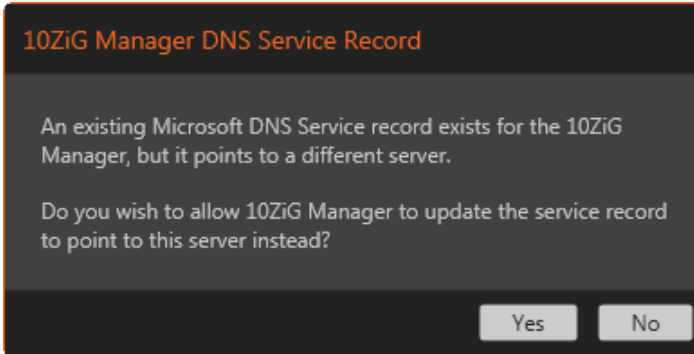
- Once the selected components and respective files have been installed, verify and enter the Image Store settings to match the previous instance.



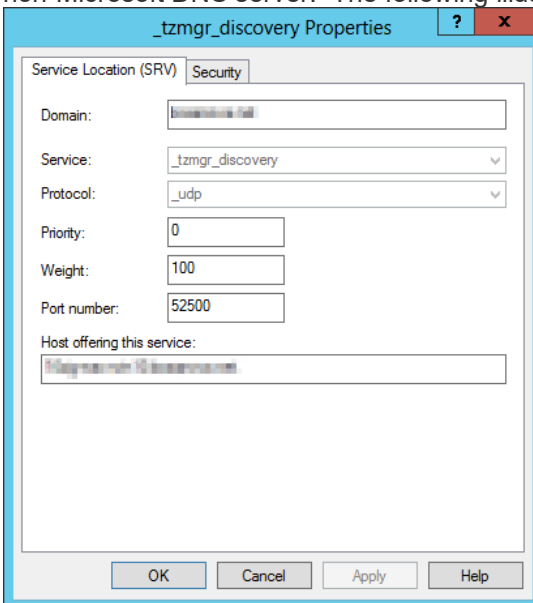
5. With the other settings, it is not essential that they match the previous instance since as these settings can be restored from backup.
6. The last consideration item for the new Manager installation is the **DNS Service Location (SRV) record** for client check-in. If your environment employs Microsoft DNS, make certain to allow the settings tool to create or update the SRV record.



Or



Otherwise, you or your DNS administrator will need to manually create/update the record on the non-Microsoft DNS server. The following illustrates the record details.



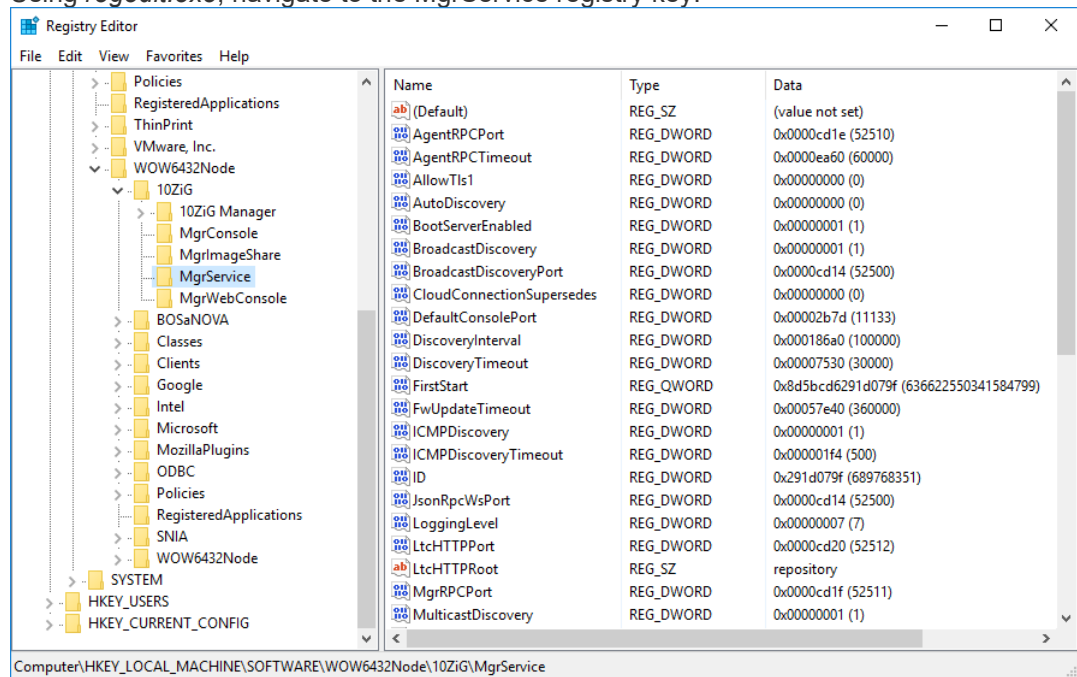
Restore from Backup Archive

A previously backed-up archive can be restored onto a new 10ZiG Manager instance to provide functional recovery.

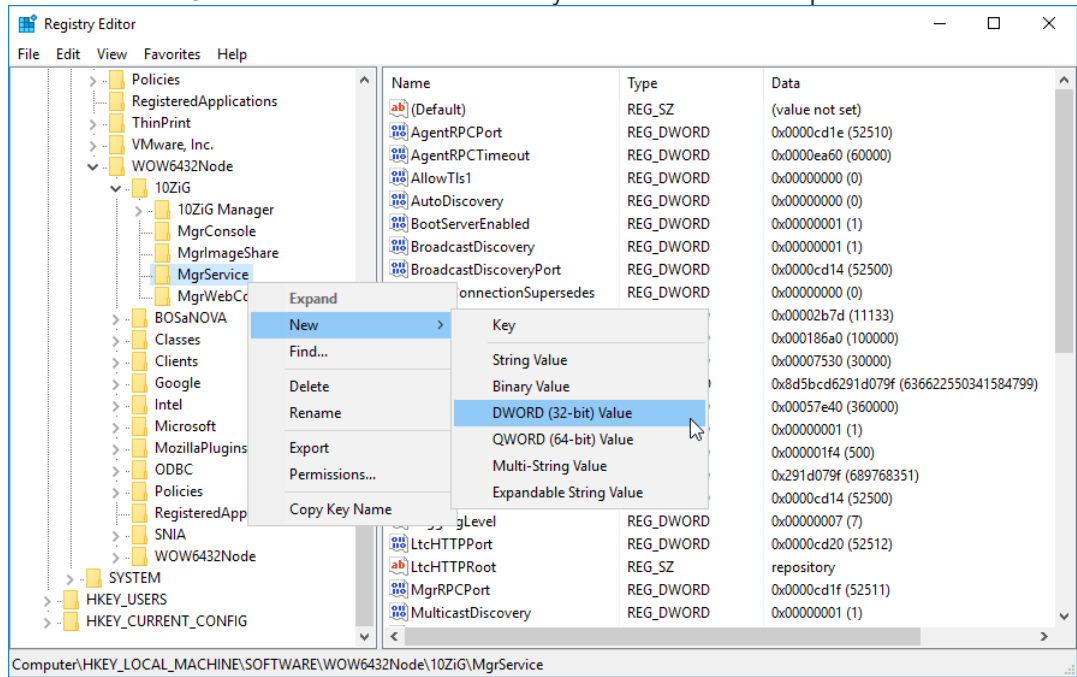
1. Shutdown the 10ZiG Manager server if it is running.
2. Using a Zip utility, extract the contents of the backup archive file to a temporary directory.

Name	Size	Packed Size	Modified	Created	Accessed
tenzigmgr	25 919 837	6 160 475	2019-02-05 16:09	2018-12-13 15:49	2019-02-05 16:09
_templates	29 221 951	20 237 842	2019-02-04 13:47	2014-11-05 14:40	2019-02-04 13:47
tenzigmgr_20190208_1602.reg	8 783	2 383	2019-02-08 16:02	2019-02-08 16:02	2019-02-08 16:02

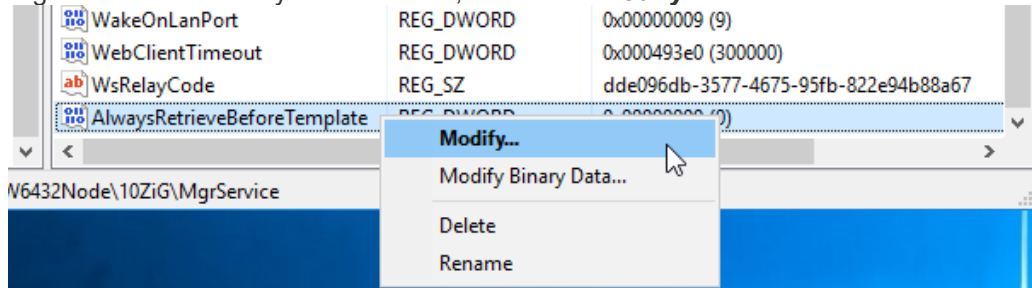
3. Double-click the “tenzigmgr_XXXXXXX_XXXX.reg” file to import the backed-up registry settings via Regedit.exe.
4. Copy or move the “tenzigmgr” folder to the “.mysql\data” subfolder of the Manager installation path, typically “C:\Program Files (x86)\10ZiG\10ZiG Manager” on 64-bit Windows and “C:\Program Files\10ZiG\10ZiG Manager” for 32-bit.
5. Copy or move the “_templates” folder to the “.repository” subfolder of the Manager installation path.
6. Due to file system size requirements, MgrDbBackup utility only backs up the client configuration settings within the database but does not back up the related configuration files. Therefore, to insure proper auto-configuration, the Manager should be configured to retrieve the configuration of each client prior to applying a configuration template.
 - a. Using *regedit.exe*, navigate to the MgrService registry key.



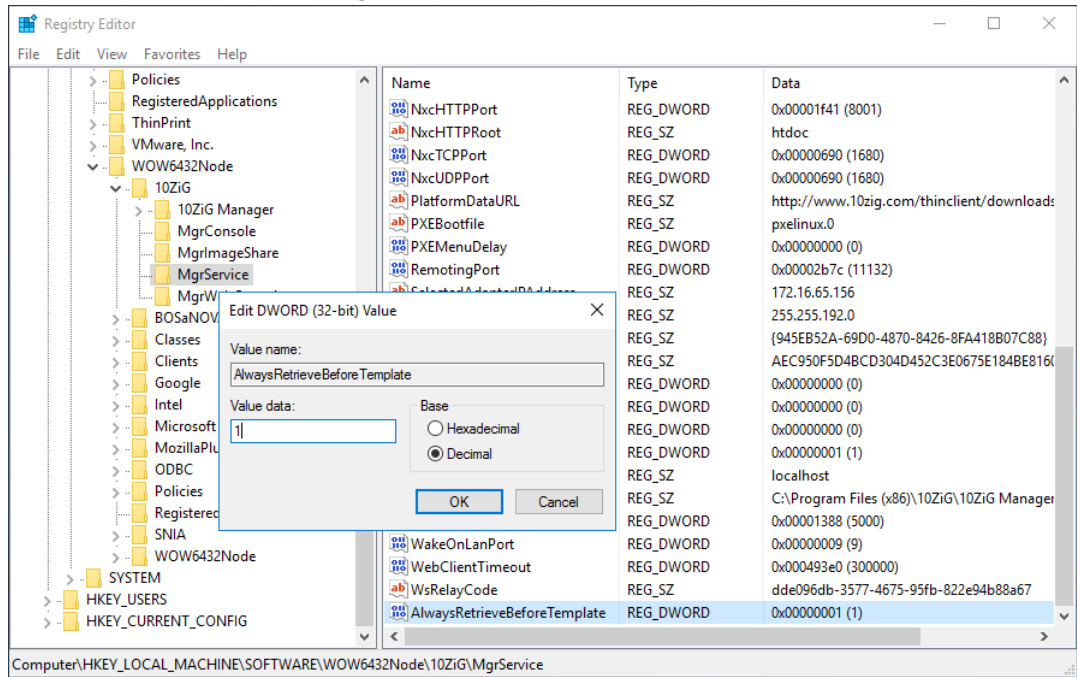
- b. Add a new DWORD value if one named “AlwaysRetrieveBeforeTemplate” does not exist.



- c. Right-click on the newly created value, and select **Modify...** to edit the value.



d. Set the value to “1” and click **OK**.



e. You can then close the Registry Editor to commit the changes.

7. Restart the Manager server.

8. The restored data components should now provide you with the same functionality as before.